

# SU7

## ROTATING CANTILEVER UMBRELLA



### Features at a glance

- Manufactured from marine-grade powder-coated aluminium, stainless steel and other non-corrosive materials
- Patented 'one movement' sliding system
- Octagonal or square umbrellas
- Umbrella rotates 360°
- Utilises lift-assist gas-strut technology for ease of deployment

### Gas Strut

Thanks to the gas-strut, the SU7 Umbrella is ultra light to handle. For locations close to the sea, we recommend a stainless steel gas-strut option.



### Quick Release Sliding System

The patented 'one movement' sliding system enables the umbrella to be opened and closed easily in one single movement.



### Canopy

- Premium Dickson Acrylic: 100% solution dyed
- Maintenance: All fabrics can be washed and are replaceable
- Shade Rating: UPF 50+
- Colourfastness: 7-8/8
- Weight: 290 g/m2
- Waterproof Rating: >300mm water column

### Colour Options\*

Arctic White	White Sand
Charcoal	Black Widow
Slate Grey	Taupe
Olive Green	Midnight Blue
Bitter Orange	Red
Terracotta	Buttercup
Charcoal Tweed	

\*4.2m Octagonal size available in limited colour range.



Fabric  
Warranty



Frame  
Warranty



High UV  
Protection



Water & Stain  
Repellent

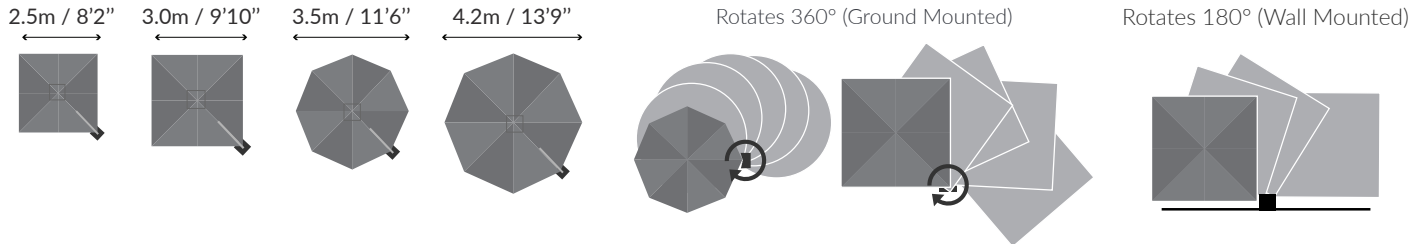


Trusted for  
over 25 years

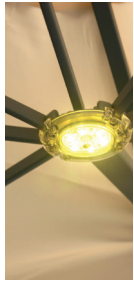


# SU7 ROTATING CANTILEVER UMBRELLA

## Size & Configuration



## Accessories



### LED Light

Optional LED Lights can be fitted in the centre hub of each umbrella and be simply operated with the small remote control provided. This option must be confirmed at time of ordering – it cannot be added retrospectively. Wiring is concealed within the frame. Can be permanently connected to an external 110-220V power supply via the Control Box Unit (provided).



### Rain Gutter

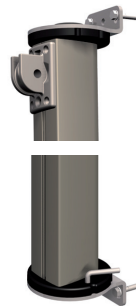
Adjoining square umbrellas can be connected with removable rain gutters to increase weatherproof area.

## Mounting Options

### Wall Fixings



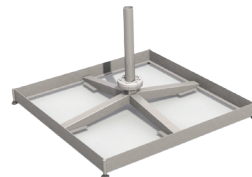
Rotates 180°



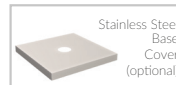
Top

Bottom

### Portable Base\*



\*Requires 8 - 12 concrete pavers (not supplied) for anchoring weight

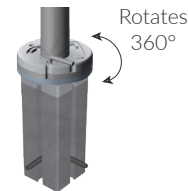


Stainless Steel Base Cover (optional)



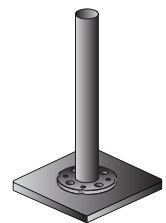
Heavy-Duty Castor Wheels (optional)

### In-Ground Anchor



Rotates 360°

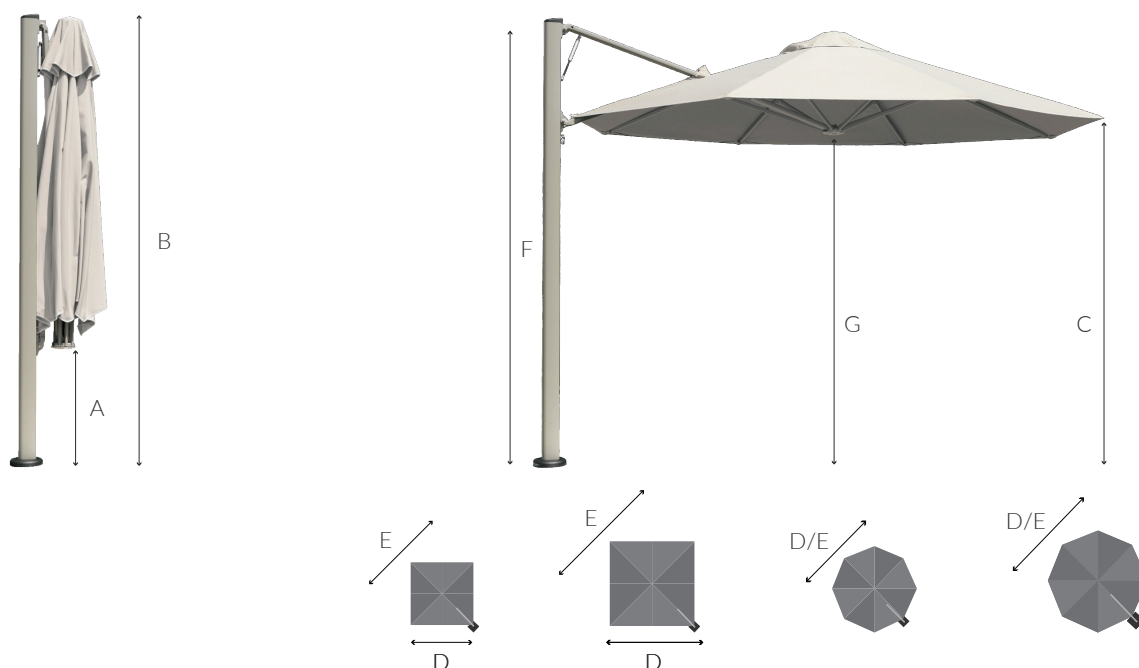
### Surface Plate



# SU7

## ROTATING CANTILEVER UMBRELLA

### Umbrella Dimensions



#### Diagram Legend

Diagram Legend		2.5m / 8'2"	3.0m / 9'10"	3.5m / 11'6"	4.2m / 13'9"
A	Ground to central frame hub when closed*	+/- 910mm / 3'0"	+/- 550mm / 1'10"	+/- 910mm / 3'0"	+/- 550mm / 1'10"
B	Height of umbrella to top of mast cap*	+/- 2920mm / 9'7"	+/- 2920mm / 9'7"	+/- 2920mm / 9'7"	+/- 2920mm / 9'7"
C	Ground to lower outer edge of canopy*	+/- 2300mm / 7'7"	+/- 2280mm / 7'6"	+/- 2300mm / 7'7"	+/- 2280mm / 7'6"
D	Centre of mast to outside edge of canopy	+/- 2570mm / 8'5"	+/- 3070mm / 10'0"	+/- 3630mm / 11'11"	+/- 4360mm / 14'4"
E	Diagonal from centre of mast to furthest corner	+/- 3630mm / 11'11"	+/- 4360mm / 14'4"	+/- 3630mm / 11'11"	+/- 4360mm / 14'4"
F	Total height to top of canopy*	+/- 2920mm / 9'7"	+/- 2920mm / 9'7"	+/- 2920mm / 9'7"	+/- 2920mm / 9'7"
G	Ground to central frame hub when open*	+/- 2250mm / 7'5"	+/- 2230mm / 7'4"	+/- 2250mm / 7'5"	+/- 2230mm / 7'4"

\*Portable Base installations will add 120mm to these measurements. Adding portable base wheels also will add a further 45-80mm/2-3".