



SU6

MULTI-CANOPY CANTILEVER UMBRELLA



Features at a glance

- Manufactured from marine-grade powder-coated aluminium, stainless steel and other non-corrosive materials
- Durable, heavy-duty, multi canopy mounting (up to 4 canopies on one mast)
- Patented 'one movement' sliding system
- Octagonal or square umbrellas
- Covers up to 3800mm / 12'6" sq.
- Utilises lift-assist gas-strut technology for ease of deployment

Gas Strut

Thanks to the gas-strut, the SU6 Umbrella is ultra light to handle. For locations close to the sea, we recommend a stainless steel gas-strut option.



Quick Release Sliding System

The patented 'one movement' sliding system enables the umbrella to be opened and closed easily in one single movement.



Canopy

- Premium Dickson Acrylic: 100% solution dyed
- Maintenance: All fabrics can be washed and are replaceable
- Shade Rating: UPF 50+
- Colourfastness: 7-8/8
- Weight: 290 g/m2
- Waterproof Rating: >300mm water column

Colour Options*

Arctic White	White Sand
Charcoal	Black Widow
Slate Grey	Taupe
Olive Green	Midnight Blue
Bitter Orange	Red
Terracotta	Buttercup
Charcoal Tweed	

*4.2m Octagonal size available in limited colour range.



Fabric Warranty



Frame Warranty



High UV Protection



Water & Stain Repellent



Trusted for over 25 years

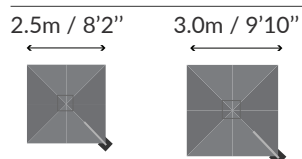


SU6

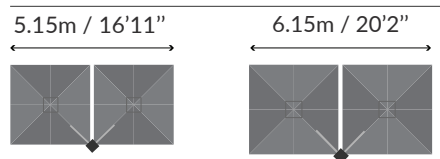
MULTI-CANOPY CANTILEVER UMBRELLA

Size & Configuration

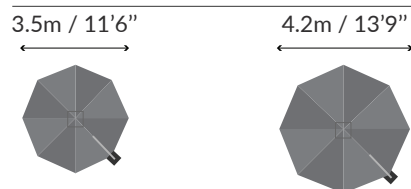
Square Uno



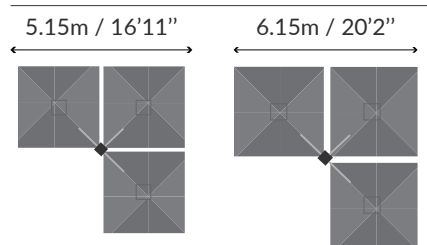
Square Duo



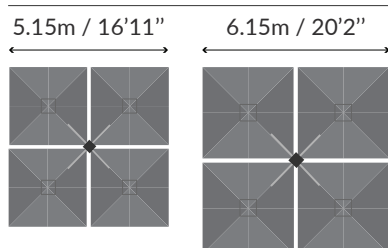
Octagon Uno



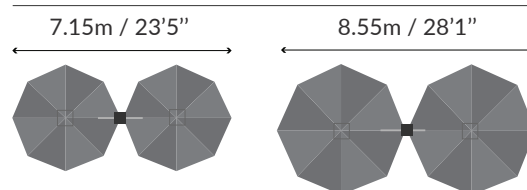
Square Trio



Square Quattro

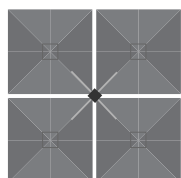


Octagon Duo



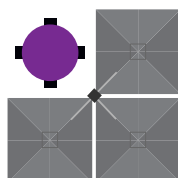
Example 1

4 canopies up



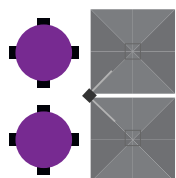
Example 2

3 canopies up



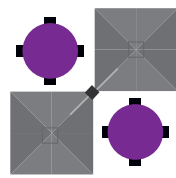
Example 3

2 canopies up



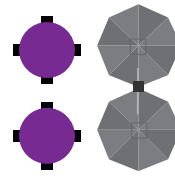
Example 4

2 canopies up



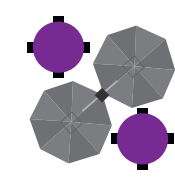
Example 5

2 canopies up



Example 6

2 canopies up



You choose where you want shade or sun. This makes the SU6 Umbrella an ideal hospitality partner.

Accessories



LED Light

Optional LED Lights can be fitted in the centre hub of each umbrella and be simply operated with the small remote control provided. This option must be confirmed at time of ordering as it cannot be added retrospectively. Wiring is concealed within the frame. Can be permanently connected to an external 110-220V power supply via the Control Box Unit (provided).

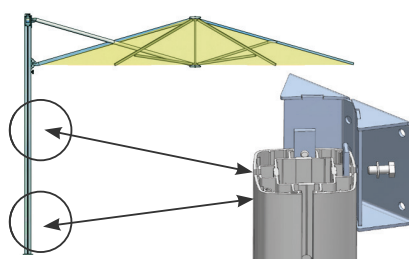


Rain Gutter

Adjoining square canopies can be connected with removable rain gutters. Rain gutters can weatherproof an area and create a unified feel in your space.

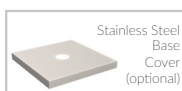
Mounting Options

Wall Mounting Bracket (2 per umbrella)



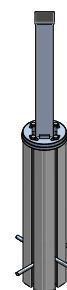
Fixing brackets are height adjustable

Portable Base*

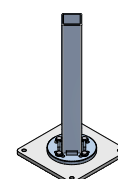


*Requires 8 - 12 concrete pavers (not supplied) for anchoring weight

In-Ground Anchor



Surface Plate



SU6

MULTI-CANOPY CANTILEVER UMBRELLA

Umbrella Dimensions

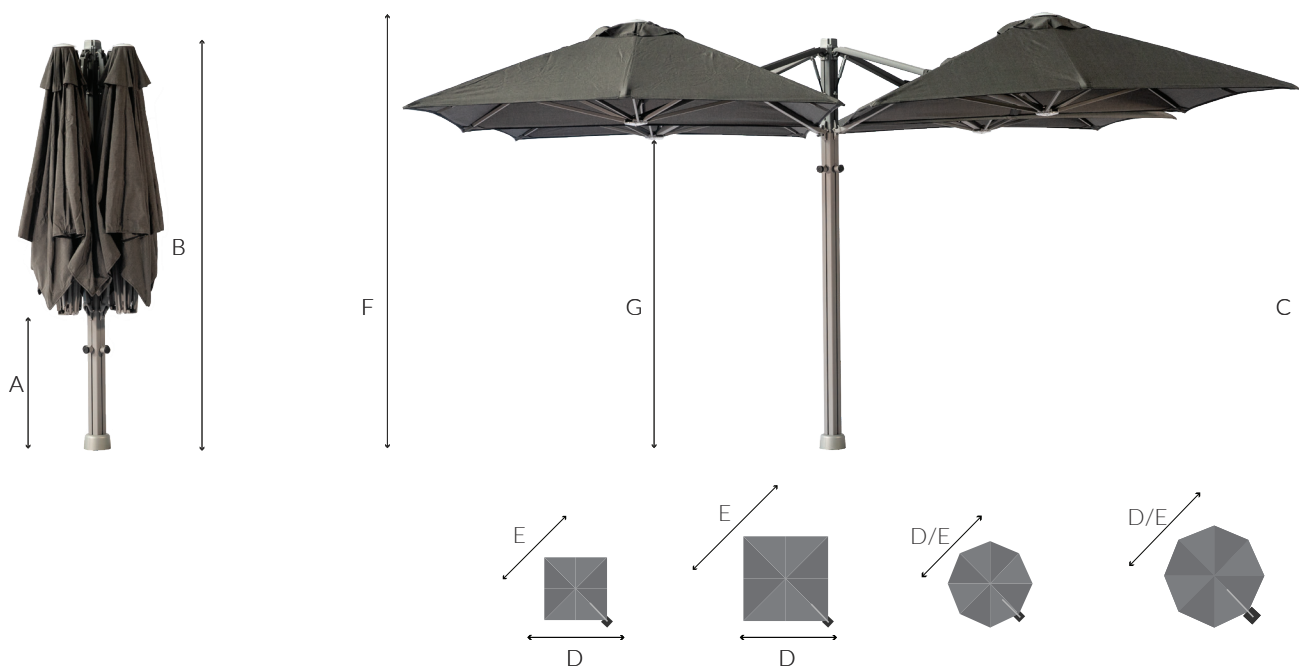


Diagram Legend

		2.5m / 8'2"	3.0m / 9'10"	3.5m / 11'6"	4.2m / 13'9"
A	Ground to central frame hub when closed*	+/- 910mm / 3'0"	+/- 550mm / 1'10"	+/- 910mm / 3'0"	+/- 550mm / 1'10"
B	Height of umbrella to top of mast cap*	+/- 2920mm / 9'7"	+/- 2920mm / 9'7"	+/- 2920mm / 9'7"	+/- 2920mm / 9'7"
C	Ground to lower outer edge of canopy*	+/- 2300mm / 7'7"	+/- 2280mm / 7'6"	+/- 2300mm / 7'7"	+/- 2280mm / 7'6"
D	Centre of mast to outside edge of canopy	+/- 2570mm / 8'5"	+/- 3070mm / 10'0"	+/- 3630mm / 11'11"	+/- 4360mm / 14'4"
E	Diagonal from centre of mast to furthest corner	+/- 3630mm / 11'11"	+/- 4360mm / 14'4"	+/- 3630mm / 11'11"	+/- 4360mm / 14'4"
F	Total height to top of canopy*	+/- 2920mm / 9'7"	+/- 2920mm / 9'7"	+/- 2920mm / 9'7"	+/- 2920mm / 9'7"
G	Ground to central frame hub when open*	+/- 2250mm / 7'5"	+/- 2230mm / 7'4"	+/- 2250mm / 7'5"	+/- 2230mm / 7'4"

*Portable Base installations will add 120mm/4.7" to these measurements. Adding portable base wheels also will add a further 45-80mm/2-3"