

SU4 TILTING OFFSET UMBRELLA



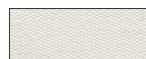
Features at a glance

- Marine grade aluminium frame and stainless steel hardware for longevity
- Elegant and simple to operate tilt system
- Rotates 360°
- Durable high performance hub and fittings
- Custom designed protective cover included

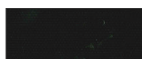
Canopy

- Commercial Grade: 100% solution dyed
- Maintenance: All fabrics can be washed and are replaceable
- Shade Rating: UPF 50+
- Colourfastness: 4/5
- Weight: 290 g/m²
- Waterproof Rating: >300mm water column

Colour Options*



Egg Shell White



Black Widow

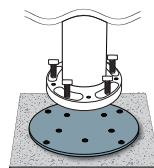


Boulder Grey

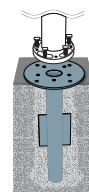
*other non stock colours available on request.

Mounting Options

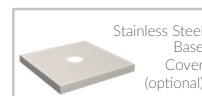
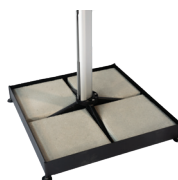
Surface Plate



In-Ground Anchor



Portable Base*



Stainless Steel Base Cover (optional)



Heavy-Duty Castor Wheels (optional)

*requires concrete pavers (not supplied) for anchoring weight



Fabric Warranty



Frame Warranty



High UV Protection



Water & Stain Repellent

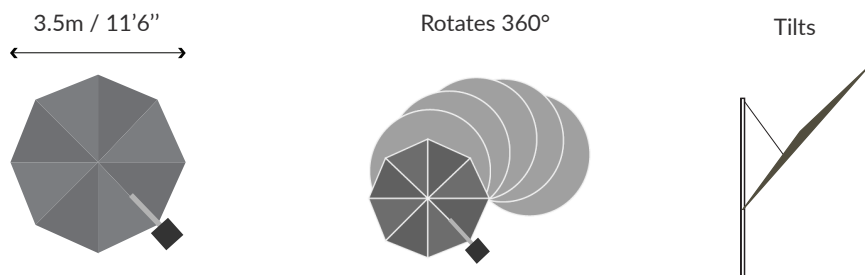


Trusted for over 25 years

SU4

TILTING OFFSET UMBRELLA

Size & Configuration



Umbrella Dimensions

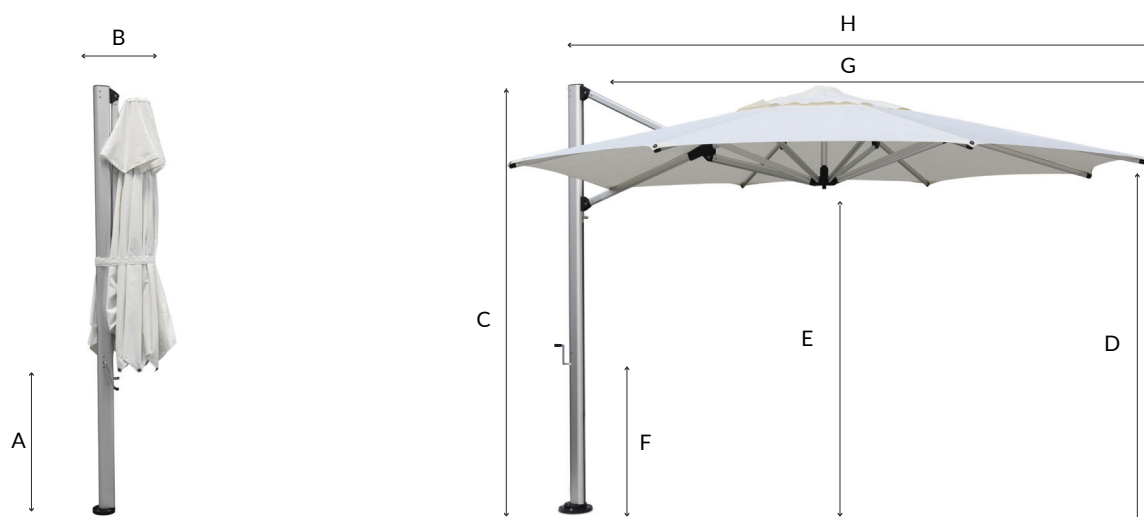


Diagram Legend

| | |
|----------|--|
| A | Clearance of Closed Strut Arms* |
| B | Depth of Umbrella When Closed |
| C | Overall Height* |
| D | Height to Edge of Canopy* |
| E | Height to Centre Hub* |
| F | Handle Height* |
| G | Canopy Width |
| H | Centre of Mast to Outside Edge of Canopy |

3.5m/11'6" Octagon

| |
|-----------------|
| 880mm / 2'11" |
| 450mm / 1'6" |
| 2723mm / 8'11" |
| 2125mm / 7'0" |
| 2065mm / 6'9" |
| 940mm / 3'1" |
| 3480mm / 11'5" |
| 3595mm / 11'10" |

*Portable Base installations will add 120mm/4.7" to these measurements. Adding portable base wheels also will add a further 45-80mm/2-3".